

NOTES

X NUMBER REQUIRED

GLASS SPEC:
OUTER : 6mm HST TOUGHENED GLASS
CAVITY : 16mm ARGON FILLED + WARM EDGE SPACER + DC3363 UV
RESISTANT SILICONE EDGE SEAL
INNER : 6mm HST TOUGHENED OR 8.8mm LAMINATED GLASS + LOW E
COATING

- LIGHT TRANSMISSION = 78 %
- CENTRE PANE U VALUE = 1.1 W/m².K
- SOLAR G VALUE = 0.63
- ACOUSTIC REDUCTION = 34 (6/6) 39 (6/8.8) Rw dB
- AIR PERMEABILITY = CWCT CLASS A4
- WEATHER RESTIANCE = CWCT CLASS A7
- WIND RESISTANCE = CWCT CLASS E2400
- WEIGHT = 45 KG/m²
- DOWSIL 3363 UV RESISTANT SILICONE EDGE SEALS TO IGU
- DOWSIL 791 UV RESISTANT EDGE SEALS TO FRAME
- AA FIRE-RATED: AA DESIGNATION (NATIONAL CLASS) OR bROOF (T4)
EUROPEAN CLASS AND EURO CLASS A1 NON-COMBUSTIBLE
- LOADS = 750N/m² WIND & 640N/m² SNOW

ROOFLIGHT ORDER SIZE = OVERALL FINISHED AND WEATHER KERB DIMS

GLASS BONDED TO FRAME WITH GLAZING SECURITY TAPE ILLBRUCK TN136

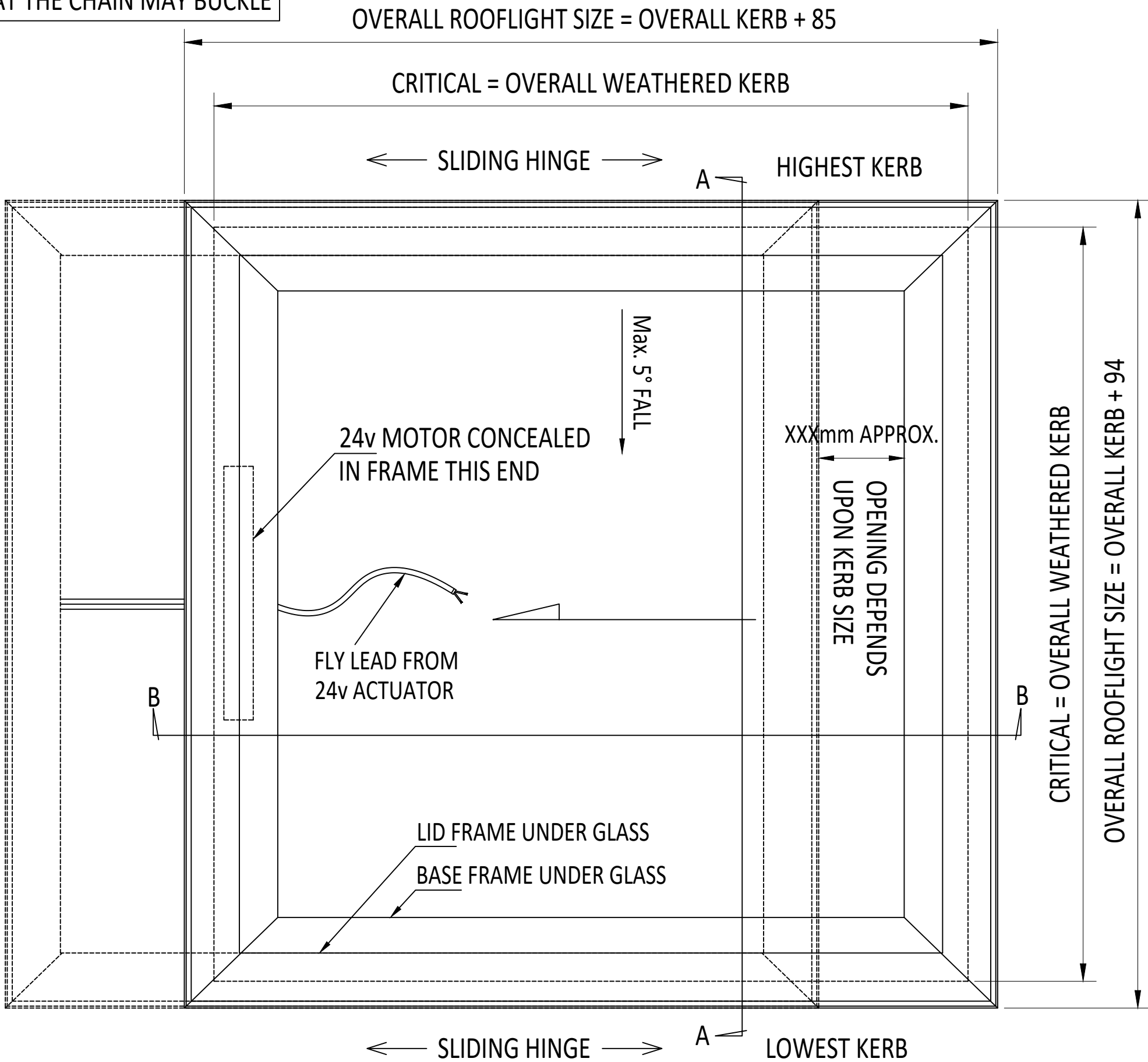
KERB DETAILS SHOWN INDICATIVE DETAILED DESIGN BY OTHERS

MIN. 5° FALL RECOMMENDED TO HELP SHED WATER. LARGER UNITS MAY
REQUIRE STEEPER PITCHES. FINAL DECISION BY OTHERS.

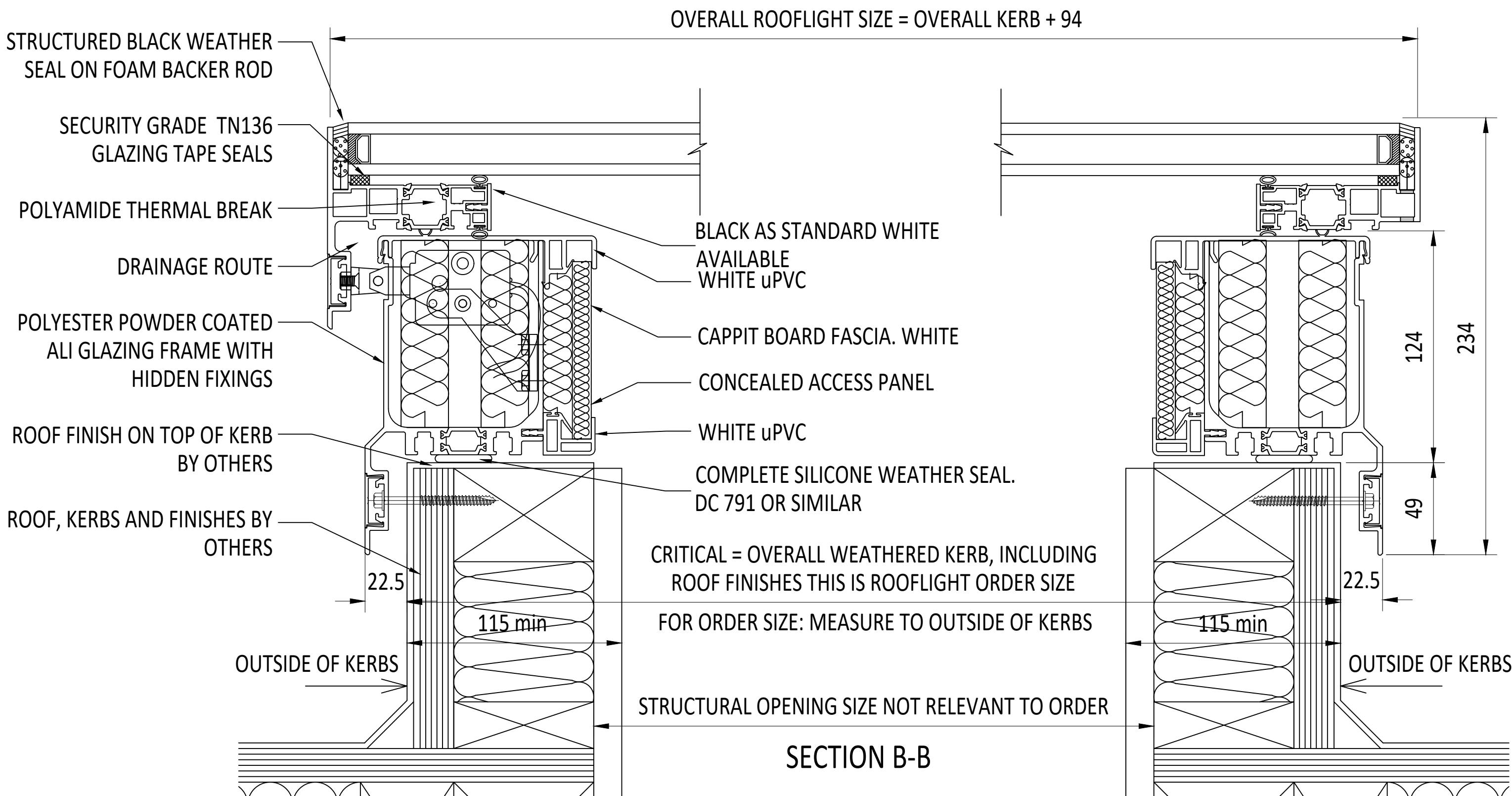
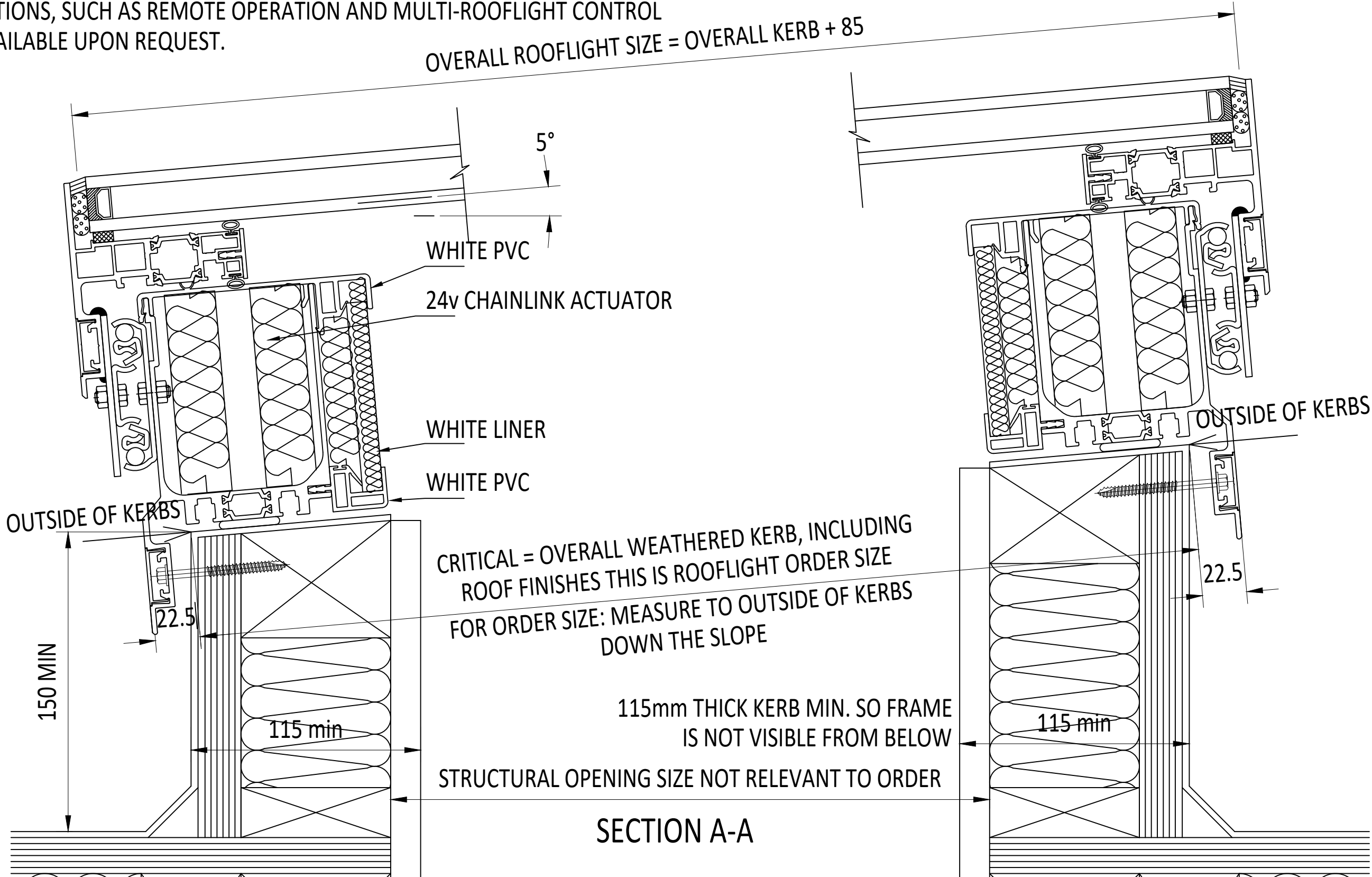
LID TO ALWAYS SLIDE ACROSS SLOPE NOT UP AND DOWN.

CHAIN STROKE IS KERB SIZE DEPENDANT. TRANSFORMER WALL SWITCH
SUPPLIED AS STANDARD. POWERED BY 24v CHAINLINK ACTUATORS, ALL
ELECTRICAL COMMISSIONING BY OTHERS. OTHER SWITCH OR CONTROL
OPTIONS, SUCH AS REMOTE OPERATION AND MULTI-ROOFLIGHT CONTROL
AVAILABLE UPON REQUEST.

IF ROOFLIGHT IS NOT ORIENTATED THIS WAY
THERE IS A CHANCE THAT THE CHAIN MAY BUCKLE



EXTERNAL PLAN VIEW
TRUE VIEW ON SLOPE



CDM :HAZARD IDENTIFICATION - HANDLING MATERIALS

BE AWARE OF SHARP EDGES AND CORNERS WHEN HANDLING MATERIALS. MOST EDGES AND CORNERS WILL BE
DEBURRDED BUT THERE IS STILL A SMALL RISK. WEAR APPROPRIATE PPE REQUIRED FOR THE TASK.
THE MHOR 1992 SET OUT A CLEAR RANKING OF MEASURES FOR DEALING WITH RISKS FROM MANUAL HANDLING,
THESE ARE:

- FIRST : AVOID HAZARDOUS MANUAL HANDLING OPERATIONS SO FAR AS IS REASONABLY PRACTICABLE;
- SECOND : ASSESS ANY HAZARDOUS MANUAL HANDLING OPERATIONS THAT CANNOT BE AVOIDED; AND
- THIRD : REDUCE THE RISK OF INJURY SO FAR AS IS REASONABLY PRACTICABLE.

HAND PROTECTION (MANDATORY) TO: BS EN 388:1994.
ROOFLIGHTS MUST ONLY BE INSTALLED BY COMPETENT CONTRACTORS.
DANGER OF DAMAGING GLASS IF IT IS WALKED UPON. GLASS IS CLASSED AS NON-FRAGILE BUT SHOULD NOT BE
WALKED ON. USE SPREADER BOARDS.
REFER TO RISK ASSESSMENT FOR FURTHER DETAILS.
FALL FROM HEIGHTS DURING INSTALLATION.

KERB DETAILS SHOWN INDICATIVE
ONLY. DETAILED DESIGN BY OTHERS

230v MAINS POWER

COMMON

EARTH

LIVE

LIVE OPEN

LIVE CLOSE

MOTOR FLYLEAD

REMOTE FOB

MANUAL SWITCH

COMES AS STANDARD

24v ACTUATOR WITH TRANSFORMER SWITCH OPTIONS:

- MANUAL WALL SWITCH (STANDARD)
- OPTIONAL EXTRAS
 - REMOTE FOB
 - WIRED RAIN SENSOR
 - WIRELESS RAIN SENSOR
 - WIND AND RAIN SENSOR
 - WI-FI WALL SWITCH WITH SMART APP
 - MULTI-UNIT CONTROL PANEL
 - BATTERY BACK-UP CONTROL PANEL
 - REMOTE SWITCH
 - SLAVE SWITCH
 - MULTI-CHANNEL OPTIONS

WIRED OR WIRELESS RAIN SENSOR

MOTOR & SENSOR FLY LEADS MUST BE
WIRED BACK TO SWITCH.

MOTOR FLY LEAD EXITS FRAME
CENTRALLY OPPOSITE THE HINGE SIDE.

IF IN DOUBT ASK DO NOT SCALE	IT IS THE RESPONSIBILITY OF THE KERB DESIGNER TO ENSURE THE KERB WILL BE STRUCTURALLY ADEQUATE TO HOLD THE ROOFLIGHT. KERBS SHOWN ON THESE DRAWINGS ARE FOR ILLUSTRATION PURPOSES ONLY.	The manufacturer would advise an installation with a minimum pitch of 5° for rooflight units to minimize water pooling. Whilst the product can be installed flat without detriment to the warrantee, the manufacturer cannot be held responsible for any excessive pooling of water to the surface of the rooflight, post installation, if installed without an adequate fall, larger units may require a greater fall. The final decision on amount of fall required must be made by the client and relayed to the installer.	THIS DRAWING MUST NOT BE COPIED OR PASSED TO A THIRD PARTY WITHOUT WRITTEN CONSENT FROM THE MANUFACTURER.	CHECKED D.PUGH DATE 07-02-2022 DRAWN R.P. DATE 07-02-2022	TOLERANCE UNLESS OTHERWISE STATED ±5 DIMENSIONS IN MM SCALE 1:2, 1:7 @ A1	MATERIAL ALUMINIUM + GLASS FINISH MARINE GRADE POLYESTER POWDER COAT OPTIONS: RAL 7016 ANTHRACITE GREY, RAL 9005 BLACK, RAL 9010 WHITE, 30% GLOSS	REV AMENDMENTS SIGNED CHECKED DATE	Sterlingbuild, Unit 6a Riverside Industrial Estate, London Colney By Pass, London Colney, AL2 1DT Telephone 0208 830 7000 TITLE: SIGNATURE 24v SLIDING FLATGLASS	DRAWING N°. RGR-HV-20-304 REV	SIZE A1 Sterlingbuild
------------------------------	---	--	---	--	---	---	--	--	----------------------------------	--------------------------