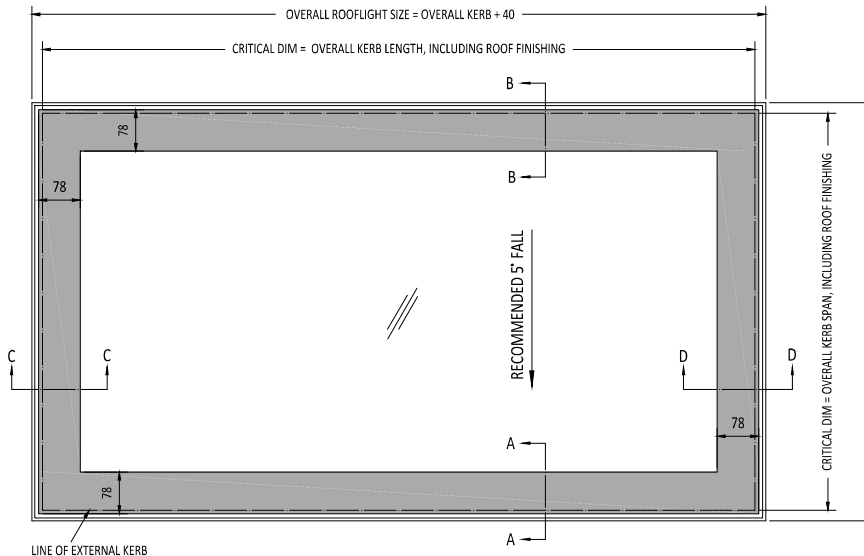
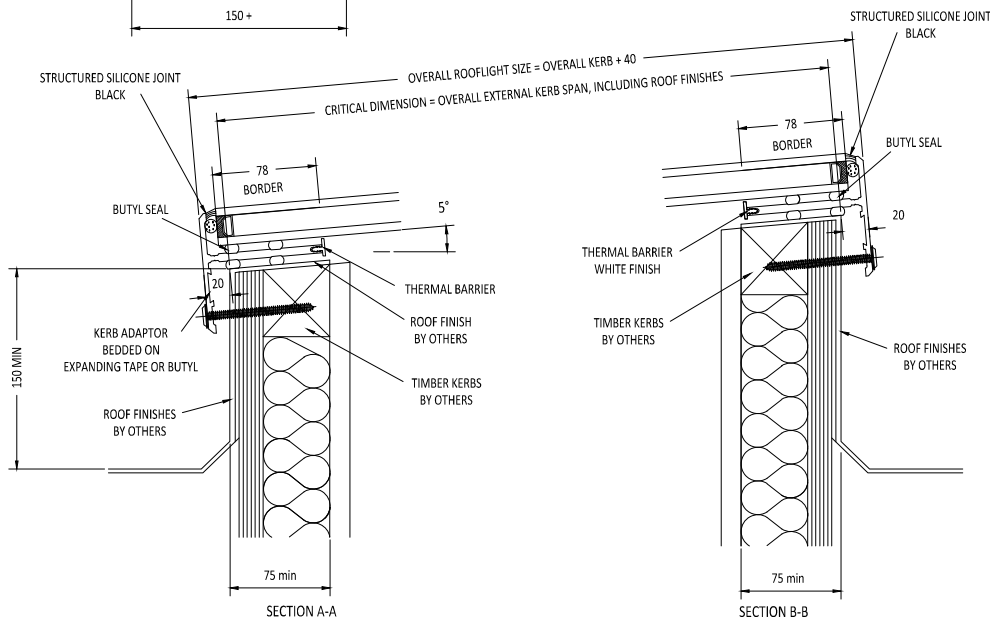
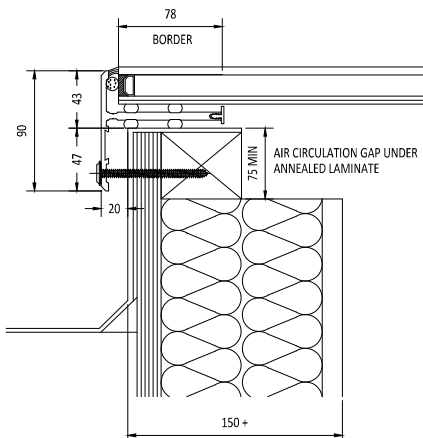


CDM : HAZARD IDENTIFICATION - HANDLING MATERIALS
BE AWARE OF SHARP EDGES AND CORNERS WHEN HANDLING MATERIALS. MOST EDGES AND CORNERS WILL BE
DEBURROED BUT THERE IS STILL A SMALL RISK. WEAR APPROPRIATE PPE REQUIRED FOR THE TASK.
THE MOPR 1992 SET OUT A CLEAR RANKING OF MEASURES FOR DEALING WITH RISKS FROM MANUAL HANDLING,
THESE ARE:
• FIRST: AVOID HAZARDOUS MANUAL HANDLING OPERATIONS SO FAR AS IS REASONABLY PRACTICABLE.
• SECOND: ASSESS ANY HAZARDOUS MANUAL HANDLING OPERATIONS THAT CANNOT BE AVOIDED, AND
• THIRD: REDUCE THE RISK OF INJURY SO FAR AS IS REASONABLY PRACTICABLE.
HAND PROTECTION (MANDATORY) TO: BS EN 388:2014.
ROOFLIGHTS MUST ONLY BE INSTALLED BY COMPETENT CONTRACTORS.
DANGER OF SHATTERING GLASS IF IT IS WALKED UPON. GLASS IS CLASSIFIED AS NON-FRAGILE BUT SHOULD NOT BE
WALKED ON. USE SPREADER BOARDS.
REFER TO RISK ASSESSMENT FOR FURTHER DETAILS.

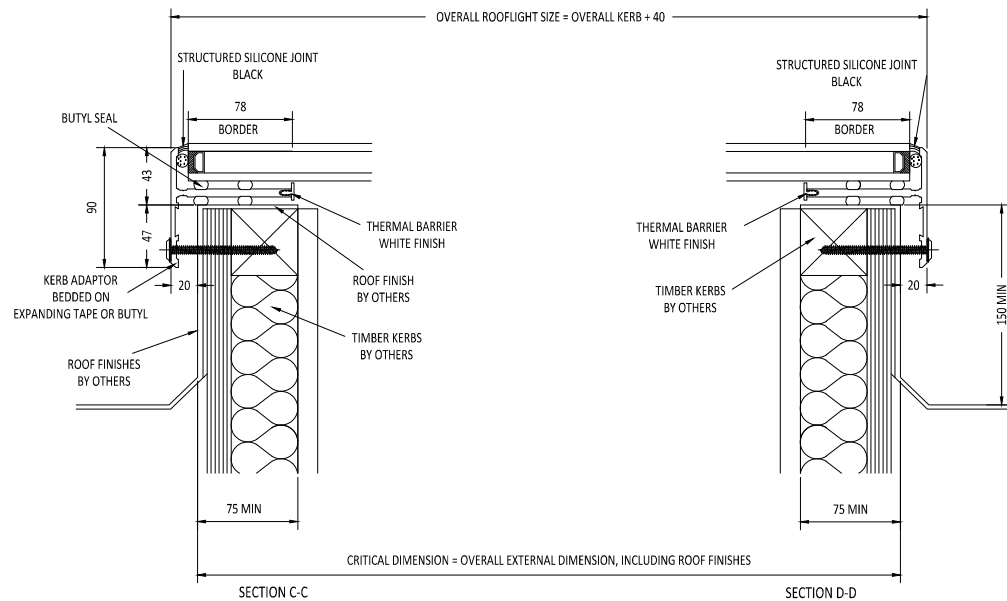


NOTES

IF KERBS ARE MORE THAN 130mm THICK INCLUDING
FINISHES, AN AIR CIRCULATION GAP MUST BE USED TO
AVOID HEAT BUILD UP UNDER ANNEALED LAMINATED GLASS



PLAN VIEW
True view on slope



NOTES

X No. REQUIRED

GLAZING SPECIFICATION:

OUTER SKIN: 6mm CLEAR TOUGHENED GLASS
WITH SANDBLAST BORDER TO FACE 2 OR PAINT
CAVITY: 16mm ARGON FILLED + WARM EDGE SPACER
INNER SKIN: 6mm CLEAR HST TOUGHENED GLASS OR 6.8 LAMINATED
WITH LOW-E COATING TO CAVITY FACE

SILICONE BONDED

ROOFLIGHT WEIGHT = 43 kg/m²

STANDARD DESIGN LOAD = 750 N/m². (Please inform us if you require a
higher load for wind etc.)

BORDER SHOWN AS STANDARD TO COVER GLAZING FRAME.
OTHER DIMS AVAILABLE UPON REQUEST. PAINT OPTION AVAILABLE ON
TOUGHENED TOUGHENED DGU'S ONLY.

LIGHT TRANSMISSION = 78%

SOLAR G VALUE = 0.63

ACOUSTIC = 35 Rw dB Toughened or 37 Rw dB Laminated

CENTRE PANE U VALUE = 1.1W/m².K

PRODUCT U VALUE = AS LOW AS 1.3 W/m².K

DIMENSIONS SHOWN DOWN THE SLOPE.

KERB DETAILS SHOWN INDICATIVE DETAILED DESIGN BY OTHERS.

IF IN DOUBT ASK
DO NOT SCALE

IT IS THE RESPONSIBILITY OF THE
KERB DESIGNER TO ENSURE THE
KERB WILL BE STRUCTURALLY
ADEQUATE TO HOLD THE
ROOFLIGHT. KERBS SHOWN ON
THESE DRAWINGS ARE FOR
ILLUSTRATION PURPOSES ONLY.

The manufacturer would advise an installation with a
minimum pitch of 5° for rooflight units to minimize water
pooling. While the product can be installed flat without
detrimen to the warranty, the manufacturer cannot be
held responsible for any excessive pooling of water to
the surface of the rooflight post installation. If installed
without an adequate fall.

THIS DRAWING MUST
NOT BE COPIED OR
PASSED TO A THIRD
PARTY WITHOUT
WRITTEN CONSENT
FROM THE
MANUFACTURER.

CHECKED
DATE
DRAWN
D. PUGH
DATE
15-12-2015

TOLERANCE UNLESS
OTHERWISE STATED
±5
DIMENSIONS IN
MM
SCALE
1:2 & 1.5 @ A1

MATERIAL
ALUMINIUM + GLASS
FINISH
POLYESTER POWDER
COATING COLOUR
T.B.C.

| REV | AMENDMENTS | SIGNED | CHECKED | DATE |
|-----|------------|--------|---------|------|
| | | | | |
| | | | | |
| | | | | |
| | | | | |
| | | | | |

Sterlingbuild Ltd.
Unit 14, Barnfield Road, Folkestone, Kent CT19 5SU
Telephone 01304 892346.
E-mail enquiries@sterlingbuild.co.uk

TITLE:

FIXED DOUBLE GLAZED
FLATGLASS SINGLE PANE

 **Sterlingbuild**

A1

DRAWING N°
RG-80-100
SHEET 1 OF 1

REV